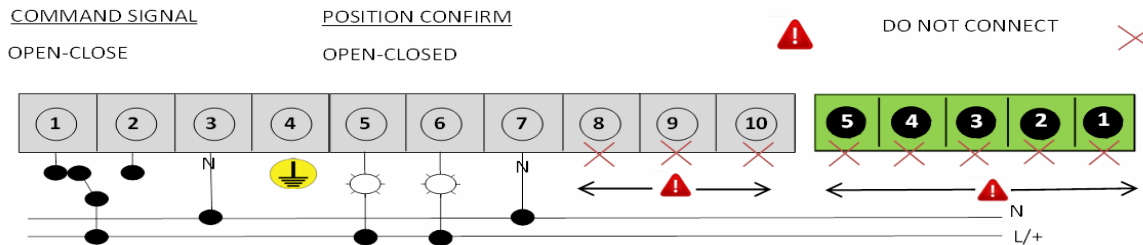


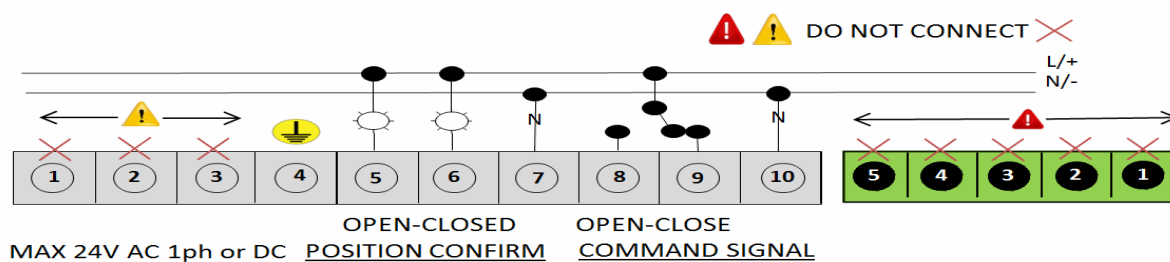
HIGH VOLTAGE EXTERNAL POWER SUPPLY CONNECTION

WIRING DIAGRAM - ON OFF FUNCTION FOR 85 -300V AC 1ph EXTERNAL POWER SUPPLY

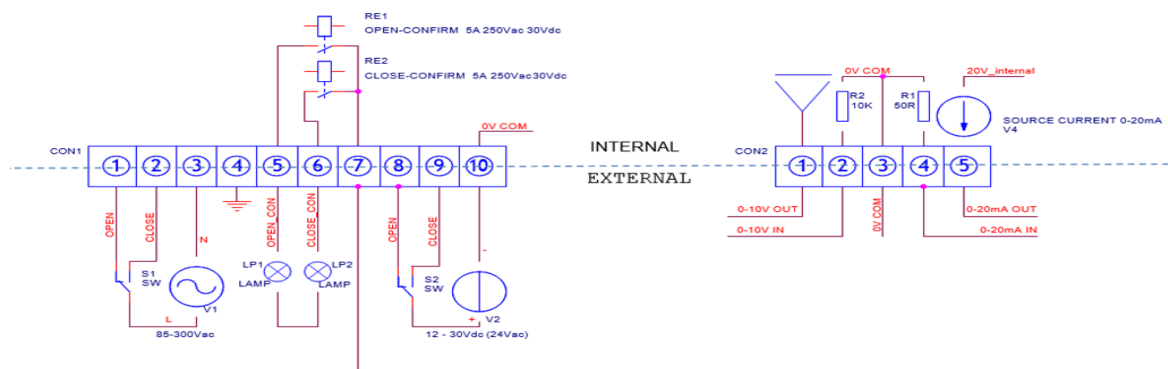


LOW VOLTAGE EXTERNAL POWER SUPPLY CONNECTION

WIRING DIAGRAM - ON OFF FUNCTION FOR 24V AC /1ph OR 12-30V DC EXTERNAL POWER SUPPLY



10-way Molex Plug Connector			
Pin No	Connection Input / Output	Pin No	Connection Input / Output
1	90 – 300v AC Power Open Control	6	Relay Out (Closed Feedback Position)
2	90 – 300v AC Power Closed Control	7	Relay Out (Neutral Connection)
3	90 – 300v AC Neutral Connection	8	0 – 90v AC/DC Power Open Control
4	90 – 300v AC (PE) Protective Earth	9	0 – 90v AC/DC Power Closed Control
5	Relay Out (Open Feedback Position)	10	0 – 90v AC/DC Neutral Connection
5-way Fixed Connection			
1	0 – 10v Analogue control (Out)	2	0 – 10v Analogue control (In)
3	Common connection for Analogue	4	20mA Analogue control (In)
5	20mA Analogue control (Out)		



WIRING FOR MODULATING (PROPORTIONAL CONTROL) FUNCTIONALITY

FOR HIGH VOLTAGE (85 -300V AC 1PH) EXTERNAL POWER SUPPLY

COMMAND SIGNAL

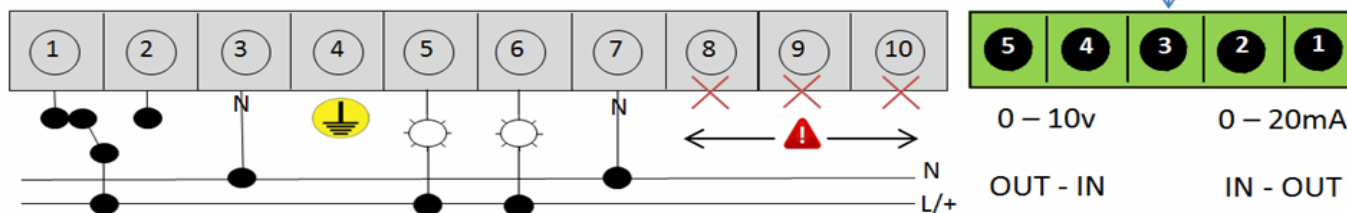
OPEN-CLOSE

POSITION CONFIRM

OPEN-CLOSED

DO NOT CONNECT

Common



FOR LOW VOLTAGE (24V AC/1ph OR 12-30V DC) EXTERNAL POWER SUPPLY

